



Healthcare Products

The LYNX mission is to provide Animal Care Washing Systems of the highest standards, quality, and reliability in the industry. Our service and customer care will be unmatched.

Model 480LX Automated Cart and Utensil Washer

The LYNX Model 480LX Cart & Utensil Washer is a heavy duty, large capacity, hydro-spray washer/dryer designed for use in dietary and central processing departments to clean, sanitize and dry surgical cases, general purpose carts, dietary carts, racked utensils and utility items used in health care facilities. Pit mounting is standard.



Size:

Compartment: 40" wide x 85" high x 170" long

Overall Unit: 101" wide x 121" high x 205" long

Note: Washer can be designed to any size to meet new or existing applications. (Overall size may vary depending on chosen options)

Standard Features:

- Modular Construction
- Knock-down Shipment
- Oscillating Spray Jet System
- Personnel Safety Features
- Micro-computer Control System with Modem Package
- Automatic Four-phase Treatment Cycle
- Automatic Self-cleaning Screen
- Temperature Guarantee
- Insulated Construction
- Incoming Utility Gauges
- Water Temperature Booster
- Recirculated Hot Air Drying System

Construction:

- All Stainless Steel Construction
- Automatic Water Level Control
- Stainless Steel Steam Coil Heating
- Touch Screen Operator Interface
- Programmable Cycles
- Observation Windows
- S/S Recirculation Piping and Components

Accessories:

- Modular Walls
- Barrier Wall Flange(s)
- Utensil Cart

Washing • Disinfection • Filling • Conveying

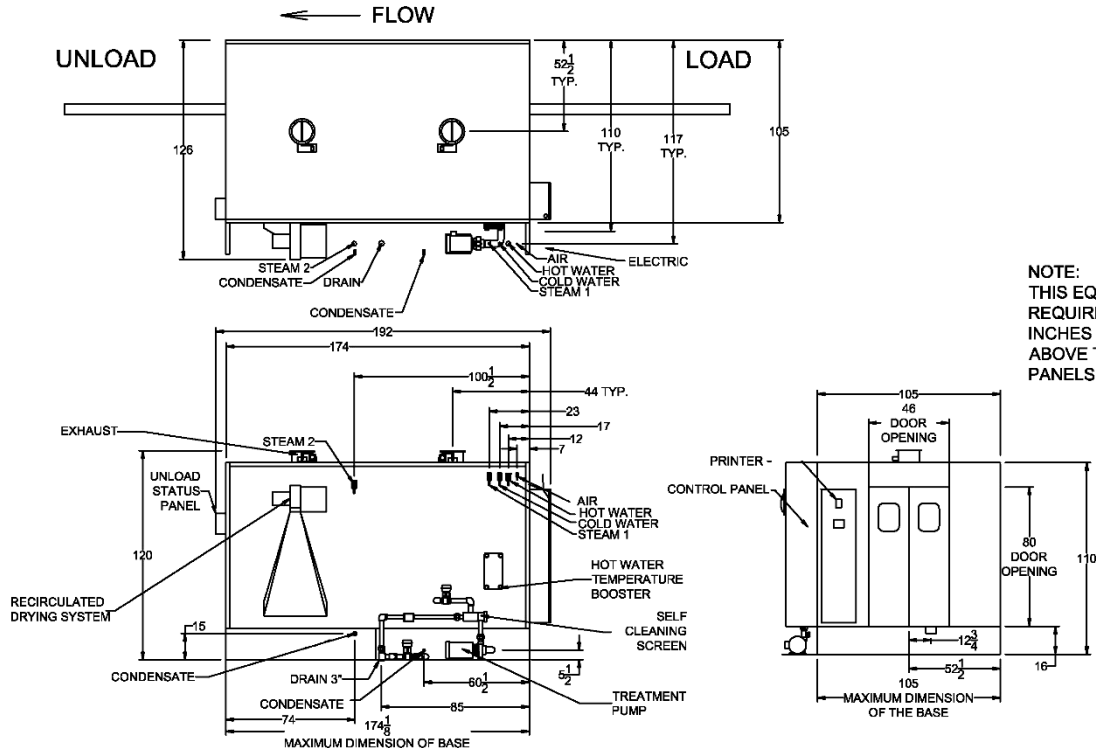


Utilities: 480LX

E	Electrical	3-60-208/230/460 V	25 HP	
S1	Steam	2½" NPT	35-80 PSI	Dynamic ± 5 PSI, 1000 #/Hr Flow Rate - Washer
S2	Steam	2½" NPT	35-80 PSI	1400 #/Hr Flow Rate - Dryer
HW	Hot Water	1½" NPT	35 PSI	50 GPM @ 140 °F ± 5 °F, 70 Gallon/Load Consumption
C	Condensate	1" NPT		2 - Connections
D	Drain	3" Floor Drain (Minimum)	120 GPM	Flow Rate @ 200 °F
V1	Vent	12" ID Duct (Washer)	700 CFM	Saturated Vapor @ 190 °F
V2	Vent	12" ID Duct (Dryer)	700 CFM	Saturated Vapor @ 190 °F
A	Air	½" NPT	100 PSI	6 CFM Flow Rate
CW	Cold Water	1½" NPT	35 PSI	60 GPM @ 50 °F ± 5 °F

Optional Features:

- Floor Spray Header
- Right or Left Hand Services
- Re-usable Throwaway Alkaline System
- 90-Degree Automatic Damper
- Exhaust Fan
- Stainless Steel Service Panels
- Split Base for Special Entry into Building
- Low Steam Pressure Package
- Air Compressor
- High Altitude Treatment Pump
- Seismic Tie Down
- Integral Data Collection System
- Remote Mounted Control Column
- pH Neutralization Monitoring System
- Strip Chart Printer



• Specifications are subject to change



LYNX Product Group
650 Lake Street
Wilson, NY 14172
716.751.3100 / 3101(fax)

For further information, please contact:

lynxpg.com

info@lynxpg.com • service@lynxpg.com
parts@lynxpg.com

Rev 013015