



A Donald **BASIL** Company

Life Science Solutions

The LYNX mission is to provide Animal Care Washing Systems of the highest standards, quality, and reliability in the industry. Our service and customer care will be unmatched

Model 340LX Cage and Bottle Washer

APPLICATION:

The Cage and Bottle Washer is a heavy duty, single chamber, hydro-spray washer designed for thorough, efficient cleaning of cages, racks, debris pans, and miscellaneous items used in the care of laboratory animals.

STANDARD FEATURES:

- Drop Down Door
- Oscillating Spray Jet System
- Personnel Safety Features
- Micro-Computer Control System
- Automatic Ten Phase Treatment Cycle
- Automatic Self-Cleaning Screen
- Temperature Guarantee
- Insulated Construction
- Incoming Utility Gauges
- Interior Illumination

CONSTRUCTION:

- All Stainless Steel Construction
- Automatic Water Level Control
- 7 ½ HP Treatment Pump
- Stainless Steel Steam Coil Heating
- Touch Screen Operator Interface
- Programmable Cycles
- Direct Reading Pump Pressure Gauge
- Double-Pane Glass Window

ACCESSORIES:

- Stainless Steel Mouse Box Rack
- Stainless Steel Rat Box Rack
- Stainless Steel Pan Wash Rack
- Transfer Cart
- Barrier Wall Flange Assembly



SIZE:

Compartment: 48" wide x 32" high x 48" deep

Overall Unit: 72" wide x 82" high x 55" deep

Note: Washer can be designed to any size to meet new or existing applications.

OPTIONAL FEATURES:

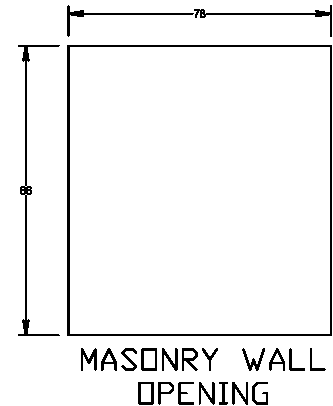
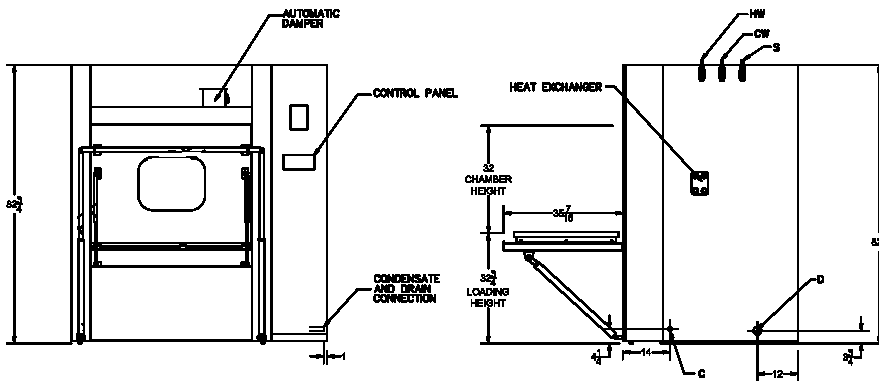
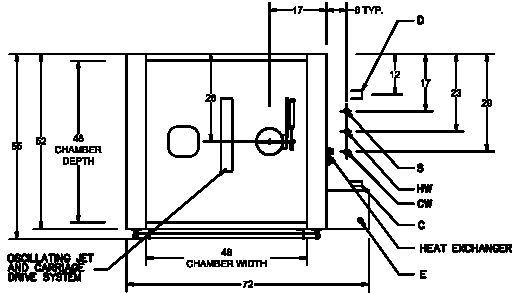
- High Capacity Center Header System
- Pass-Thru Unit
- S/S Recirculation Piping and Components
- House Hot Water Heat Exchanger
- Cold Water Fill
- Automatic Damper
- Exhaust Fan
- Drain Discharge Cool Down
- Non-Vented Vapor Condenser
- Pass-Thru Door Interlock System
- Air Compressor
- Seismic Tie Down
- Strip Chart Recorder
- Ethernet or RS-485 Data Port
- Modem
- Data Collection System
- Detergent Dispensing Systems
- pH Neutralization System
- pH Neutralization Monitoring System
- Electric Heat
- **LYNX OPTI-Wash™ System**

Make a Difference...Make it LYNX!

UTILITIES: 340LX

E	Electrical	3-60-208/230/460 V	9 Hp	
S	Steam	1 1/2" NPT	30-80 PSI	350 #/Hr Flow Rate 600 #/Hr with Optional Hot Water Heat Exchanger
HW	Hot Water	1" NPT	35 PSI	30 GPM @ 140°F ± 5°F 20 Gallon Sump Capacity
C	Condensate	1" NPT		
D	Drain	4" Floor Drain (Minimum)	90 GPM	Flow Rate @ 190°F
V	Vent	8" ID Duct	200 CFM	Saturated Vapor @ 190°F
A	Air	1/2" NPT	80-100 PSI	6 CFM Flow Rate
CW*	Cold Water	1" NPT	35 PSI	40 GPM @ 50°F ± 5°F

*CW – Required if drain discharge cool down package is ordered



NOTE:

- The selection of certain options could reduce the above stated utilities. Please consult your LYNX representative to discuss your specific requirements.
- Drawing data is for general reference only. Each sized unit and selected options will effect the overall machine size. Obtain certified drawings for design and installation details
- Specifications are subject to change without notice.